

INCREASING EFFICIENCY

Draughtproofing can offer an attractive alternative to double glazing as part of a renovation package

When calculating the cost of double glazing, local authorities and housing associations can now consider a cost-effective alternative in the form of a Design Council Award winning draughtproofing and window renovation service from Ventrolla. Like double glazing, the system reduces heating costs and noise levels and cuts out draughts. Unlike double glazing it is relatively inexpensive, does not alter a building's appearance or involve the upheaval of removing the old windows and replacing them with new.

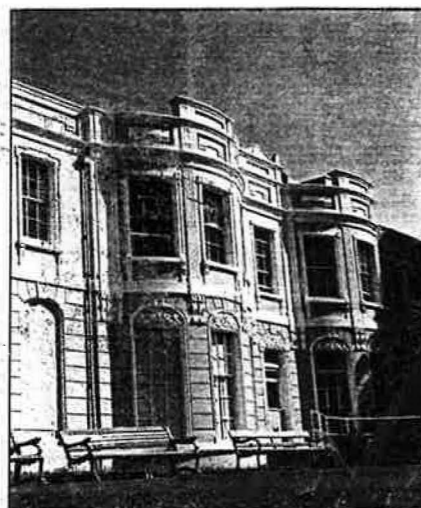
As well as achieving energy savings for the property owner, draughtproofing also saves resources in another way. Minimal energy is used to produce the system in comparison to that required in the manufacture of plastic or aluminium frames for replacement windows. Whilst the saving is relatively small on an individual basis, it can play a role in general energy conservation when considered nationwide over a long period.

Renovation service

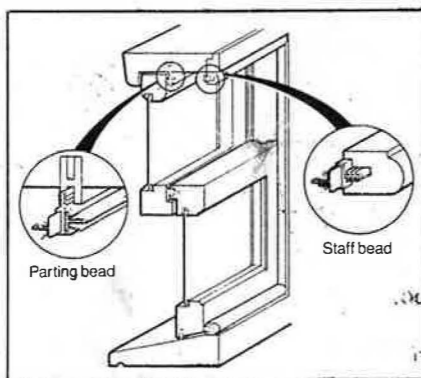
The system can be used to renovate and draughtproof all types of timber windows and doors. Instead of tearing out the old and installing new, the originals are overhauled, repaired where necessary and draughtproofed.

The draughtproofing also stops rattles, reduces noise and is 80% as thermally efficient as double glazing but at a fraction of the cost.

The service also includes replacing rotting timber sills, reglazing, fitting locks and adjusting sash weights. The work is carried out through a nationwide network of fully trained specialist installation companies equipped with all necessary materials, tools and machinery. The method of operation involves two-man teams working from inside the building and does not require the hire of scaffolding or working from cradles or ladders.



Renovated sash windows on Bitton House



The main reason building owners have double glazing fitted is to improve comfort levels inside the property. However, sealed glazed units alone do very little to achieve this aim. In fact, it is the high-performance weatherseals around the window frames which improve comfort levels by creating an efficient barrier against noise and draughts.

An average property without efficient weatherseals will experience some 2-2.5 air changes an hour. This causes loss of heat and a reduction in energy efficiency. Recognising the need for effective draughtproofing, Ventrolla set about designing and patenting a system which offered practically all the benefits of double glazing but without the same

levels of cost and inconvenience. It was impossible to produce high-performance seals simply by tacking or glueing conventional draught excluders to troublesome windows, and so a completely new concept was developed, involving the use of low-friction polypropylene pile machined into the window frames. The pile is made in varying heights to suit the different air gaps occurring between sashes and frames.

Unobtrusive

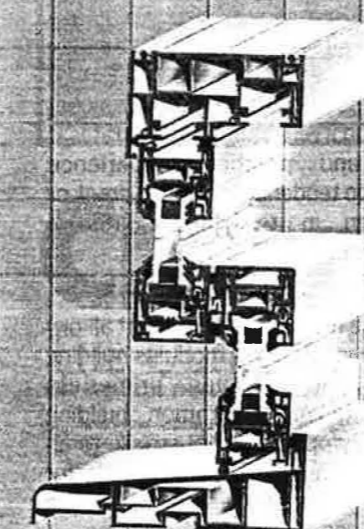
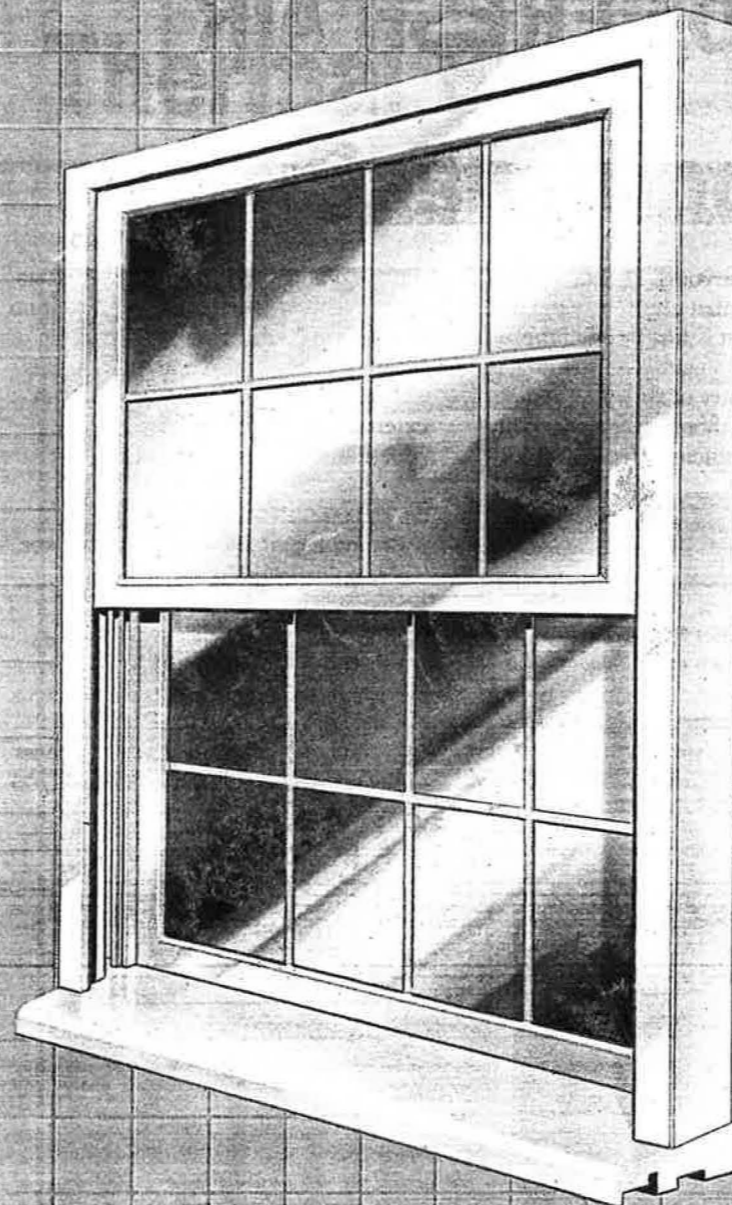
The draughtproofing does not restrict the opening and closing of the window, is unobtrusive and highly efficient. It reduces the number of air changes per hour in an average property to around 0.7. On sliding sash windows the draughtproofing also has to overcome an inherent design flaw. Because the windows slide they require a clearance gap between the sash and frame. This lets in air and noise, causing the sashes to rattle when the wind blows. To remedy this built-in defect, Ventrolla remove the existing parting bead and install a patented two-part parting bead incorporating a built-in low friction polypropylene pile. Once installed, the window slides freely and no longer produces draughts and rattles. Noise ingress is also reduced by some 10 db.

The strips which house the pile can be easily removed when redecoration takes place, then replaced again once the paint is dry. The strips are available in black, white or brown to match painted surfaces or natural wood finishes.

The system has been installed on many types of local authority and government buildings, including maisonettes for the London Borough of Wandsworth, sheltered housing for Winchester City Council, the Property Services Agency's work on the Foreign Office, and on Bitton House, a recently restored Grade II* listed Georgian-style property dating from 1800 in Teignmouth, Devon.

For further information insert 201 on the Reader Enquiry Card.

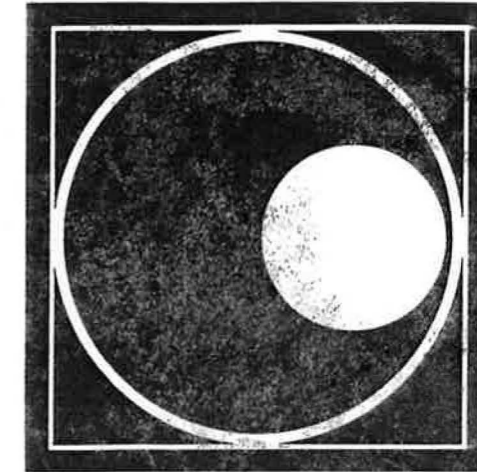
VERTICAL SLIDING SASH WINDOW



Plus Plan introduce the ultimate design in vertical sliding sash windows.

The new suite offers:

- Reproduction of traditional timber style sash windows with a slim 51mm sash sightline.
- A safe, smooth, tilt back facility for easy cleaning.
- Improved weather performance with triple weather seals.
- Central frame fixing for better installation.
- Attractive combination windows by use of a unique mullion profile.



SPECIFY PLUS PLAN

Why?

Because Plus Plan offer both public and private sectors a wider range of options. With over 1.5 million Plus Plan uPVC windows installed in a wide selection of commercial, domestic, new and refurbished buildings, check out the window system engineering for yourself.

Quality system assessed by BSI to BS5750 Part II

Product performance assessed by BSI & BBA

Extrusion now produced in the UK

Wide range of window designs

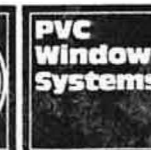
Full technical expertise and service available

Suppliers to the major window fabricators throughout the UK

Suppliers of turnkey operations for local authority own window system manufacture

For a full specification pack of profiles and a brochure contact our Lutterworth office.

It's the only option.



Plus Plan (UK) Ltd.
Ladywood Works, Leicester Road, Lutterworth, Leics. LE17 4HD
Tel: (0455) 556771. Fax: (0455) 556250.

