

# EVALUATION OF THE APPLICATION OF COOL MATERIALS IN URBAN SPACES: A CASE STUDY IN THE CENTER OF FLORINA

Stamatis Zoras\*, Antonios Tsermentselis, Panagiotis Kosmopoulos, Argiro Dimoudi

*Laboratory of Environmental and Energy Efficient Design of Buildings and Settlements,  
Department of Environmental Engineering, Democritus University of Thrace,  
Vas. Sofias 12, Greece*

\*Corresponding author: [stamatis.zoras@gmail.com](mailto:stamatis.zoras@gmail.com) [szoras@env.duth.gr](mailto:szoras@env.duth.gr),

## ABSTRACT

In the last years there is a strong interest for application of bioclimatic techniques and practices in urban neighborhoods and open spaces. This paper presents a bioclimatic study of an open space in an urban area by the use of simulation tools giving emphasis on the replacement of conventional materials with cool materials. Routes linking traditional monuments in the Greek city of Florina are characterized of decreased human thermal comfort conditions during summer time. The employment of computational fluid dynamics has contributed in the understanding of what interventions should be made at urban populated routes in order to meet defined thermal related targets.

## KEYWORDS

Cool materials, CFD modeling, open space

## 1. INTRODUCTION

It is widely approved that densely urban developments in conjunction with the use of inappropriate external materials, the increased thermal energy emission related to human related and the lack of green areas, increases environmental temperature, leading to significant environmental impacts and increased energy consumption (Fintikakis et al., 2011). Open spaces within urban developments are complicated due to thermal energy exchange between structures, shadowing and wind flow complication in comparison to general flow. Cool material and other practices (water surfaces, green roofs) are used to mitigate urban heat island effect (Gartland, 2008). The main problems that result from bad thermal conditions in settlements include decreased human thermal comfort, decreased air quality, increased heat illnesses and increased energy and water use (Stone, 2005; Baik et al., 2001).

Experimental measurements within urban developments are needed in order to identify the thermal situation. In the Greek territory there are intense thermal phenomena mainly during the summer period (Livada et al., 2002, Dimoudi et al., 2013). These are observed in open urban areas all around country. Surface temperatures in relation to microclimatic conditions (wind, temperature, radiation) must be analyzed in order to better select rehabilitating strategy of open developments.

Simulation tools must be employed (Stavarakakis et al., 2011) in order to depict the present situation around the open area, usually during the warmest day of the hot period.

Materials identification and constructions configuration must also be taken into account in the simulation process. New materials and bioclimatic techniques are then proposed and simulated in order to show their impact at the thermal urban environment. The aim of this procedure is to realize the microclimatic conditions improvement due to the rehabilitating bioclimatic techniques and practices. The selection of the appropriate measures depends on the targets that will be defined for achieving an improved thermal environment (e.g. thermal comfort).

Due to the complicated urban environment in terms of materials, reflection, emission, wind flows around buildings, altitude differences etc., the simulation tool must be selected very carefully. It must be able to simulate three dimensional flows with solar radiation taken into account. This inevitably leads to general codes of computational fluid dynamics tools (e.g. PHOENICS software tool) but with increased demand of computational resources. Other tools may be useful for the assessment of individual parameters, as surface materials and trees may influence thermal comfort (Matzarakis et al., 2006) but they would not assess the wind flow effect in geometrical detail.

This paper presents a bioclimatic study of an open urban complex space in a city of North Western Greece, Florina, giving emphasis on the replacement of conventional materials with cool materials. The studied area includes the routes linking traditional neighborhoods by the river side of the city. Experimental measurements, simulation tool verification and the simulation based assessment of the proposed redevelopment measures are presented. All simulations have been carried out by the ANSYS CFD software package.

The thermal targets of this study were defined in accordance with the 'Programme for Bioclimatic Redevelopment of Public Open Spaces – Study Guideline' ([http://www.cres.gr/kape/Scientific\\_Guide\\_19\\_7.pdf](http://www.cres.gr/kape/Scientific_Guide_19_7.pdf)). These concerned the following parameters that should be improved:

1. Mean maximum summer temperature during noon of the warmest day
2. Cooling degree hours during the typical summer day
3. Mean surface temperature during noon of the warmest day
4. Mean human thermal comfort index
5. Wind field during the typical summer day

The results of criteria 1, 3 and 5 are presented in this paper.

## **2. BIOCLIMATIC THERMAL PROBLEM**

To examine the weather conditions in the city of Florina meteorological data of the period of 1<sup>st</sup> of January 2009 to the 31<sup>st</sup> of December 2010 were used from the meteorological stations of Florina that is located in the urban complex of the city. Hourly data were available and the meteorological parameter that was examined was the air temperature (°C).

Urban climate, compared to the surrounding suburban and rural environment, varies in terms of solar radiation, characteristics of rainfall and air temperature. According to Oke (1973), almost every urban center in the world is warmer 1-4 °C than neighboring non-urban rural areas, and this enforces urban heat island effects. Also, Gilbert (1991) states that the air temperature on sunny days can be from 2.0 to 6.0 °C higher in urban compared to suburban locations.

### 3. BIOCLIMATIC INTERVENTIONS

The open urban complex that was studied, belongs at the commercial and social center of Florina city, and it is heavy populated during the week. The urban summer time microclimate in this area is mainly affected by the presence of conventional surface tiles and asphalt all over the linking routes. The ground surface of the river side routes of Florina is covered by Greek (flagstone) (Figure 1).



Figure 1: River side routes in Florina

The rehabilitation strategy of the area targets to conserve human activities and improve human thermal conditions in the open urban complex. Bioclimatic interventions could be divided in two main directions.

- the river side streets
- the linking streets of the river

The main bioclimatic interventions are characterized by increasing water surfaces, vegetation, green roofs and by installing cool asphalt and flagstones.

In order to improve thermal microclimate in the area new cool materials must be used that may reduce surface temperatures of buildings, streets and sidewalks. The proposed materials have relatively high reflectivity of solar radiation and increased emission rate. The structural surfaces should be reduced and replaced by water surfaces, soil and vegetation. Green roofs in the river side buildings or where people are accommodated would also contribute in the reduction of material thermal storage.

#### 4. MODEL VERIFICATION

Monitored data of the thermal conditions in the area of interest and surrounding locations resulted at the analytical verification of the CFD model and consequently the accurate simulation of both the current situation and proposed interventions. The ANSYS CFD model was used for the simulations.

In order to prove the ANSYS CFD model validity for the open area simulation, the model was verified against experimental data that have been carried out during September 2011. The warmest day for the period of experiment was selected in terms of the completeness of the microclimatic data (i.e. air temperature, air velocity, surface temperature). Therefore, it was chosen September the 13<sup>th</sup>, 2011, between 15:20 – 16:20 hours. The data used for validation of the model is the measurement data within the study area, i.e. the air temperature, the temperature of the material surfaces of streets, sidewalks and facades at 1.8m in height and the wind speed at the same height.

The simulation results were compared with the measured values of the surface temperature, ambient temperature and wind speed. Climate data from that period were obtained from the Florina meteorological station and used to simulate the climatic condition in the intervention area and in places where measurement was made. Since surface temperature measurements were carried out during midday, the comparisons were made for the same period.

The concept of model validity was that meteorological input from Florina's station if are applied in ANSYS CFD then this could efficiently calculate the thermal behavior of within the urban complex. From Table 1 can be noticed a satisfactory convergence of the values between experiment and simulation. Therefore, the achieved accuracy of the model that was developed for the study area was quite high. The above comparison substantiates the high reliability of the model for the assessment of both the current situation and bioclimatic upgrade in the study area.

Table 1: Comparison between experimental and simulated data

Material	Experimental / Simulated		
	Tair (°C)	WS(m//sec)	Tsurf (°C)
	1.8 m	1.8 m	
Marble	27.16 / 27.85	0.70 / 0.75	27.80 / 28.3
Concrete Brick	27.40 / 27.97	0.61 / 0.66	34.50 / 34.80
Traditional flagstone of Karistos	36.23 / 36.85	0.68 / 0.63	32.0 / 32.5

#### 5. MEAN MAXIMUM AIR TEMPERATURE AT NOON OF THE WARMEST DAY

Simulation of the average maximum summer period temperature has been carried out in the open area during noon of the warmest day. The warmest day was obtained from the period of the years 2009-2010, being the 21th of August 2010. Meteorological data from that day at noon were used in the simulation, in steady state mode, of the present and rehabilitated situation. At each case, the same meteorological data from Florina station were applied as input in ANSYS CFD with the respective materials and interventions of each configuration.

This way modeling predicted the thermal situation in the urban complex with input general meteorological data of the city.

It was assumed that in the open urban square and the linking routes in Florina, the average maximum temperatures appeared during the selected warmest day. Moreover, simulation has shown that the maximum temperatures within roads and the river side street appear at the same times. The area of interest was divided in the surface of the river side streets and river wind flow. The respective air temperatures were calculated at noon of the warmest day. Then, the resulted average maximum air temperature was compared for the case before and after rehabilitation.

Figures 2-3 depict air temperature field at each street along the river at 1.8m height during noon of the warmest day before and after rehabilitation.

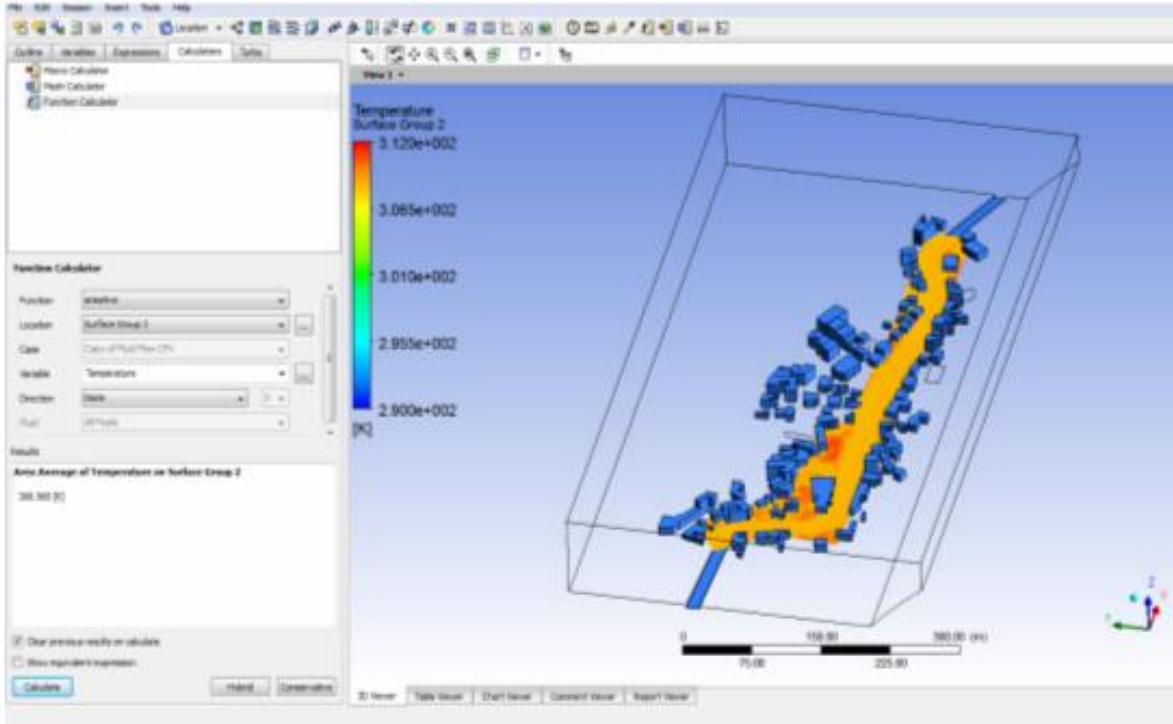


Figure 2: Present mean air temperature at 1.8 m height calculated from at least 500 grid points at each street

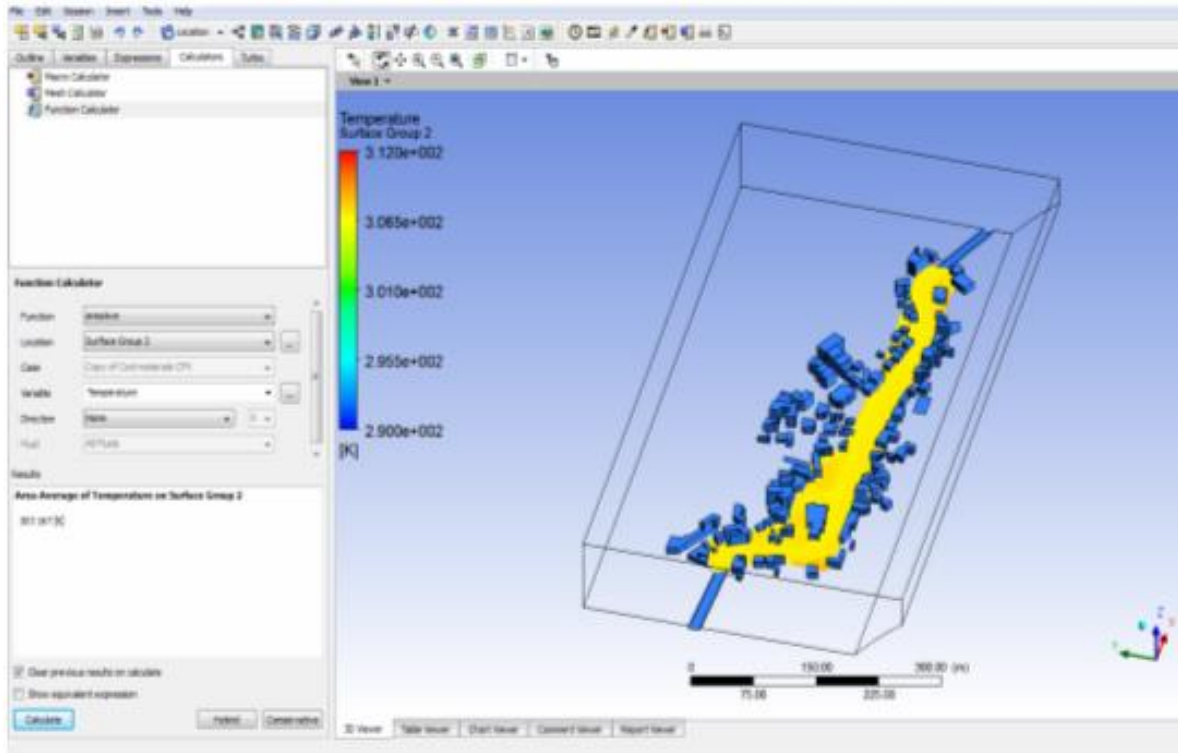


Figure 3: Mean air temperature after rehabilitation at 1.8 m height calculated from at least 500 grid points at each street

The simulated air temperature for each individual space (streets and open market) was obtained from at least 500 grid points of the mesh at 1.8m height. ANSYS CFD was applied to simulate the predicted air temperatures before and after rehabilitation with the surface areas in 21<sup>st</sup> of August 2010. The calculated total air temperature before and after case was 35,57 °C and 34.18C, respectively. So, the air temperature improvement if bioclimatic measures are taken would be 1.39°C.

## 6. MEAN SURFACE TEMPERATURE AT NOON OF THE WARMEST DAY.

CFD simulations have been carried out for the present case and for the proposed bioclimatic one. The results of the two simulations have compared concerning the warmest day of the 21<sup>st</sup> of August 2010. In the following Figures 4 and 5 display the surface temperatures for the present case and the improved one if bioclimatic techniques and practices are applied.

It was assumed that the mean surface temperature peaks during the warmest day and thus, it was calculated for all the individual roads and the market place separately. Therefore, it was assumed that the calculated surface temperatures are maximums for each individual road or open space. The mean surface temperature during noon of the 21<sup>st</sup> of August for all surfaces reached 38.21 °C in contrast with the proposed bioclimatic configuration that reached 34.69°C. The total predicted temperature difference was 3.52°C. The significant material surface temperature reduction was due to shadowing from vegetation, water surfaces, green roofs, cool asphalt and cool flagstones of pavements and sidewalks.

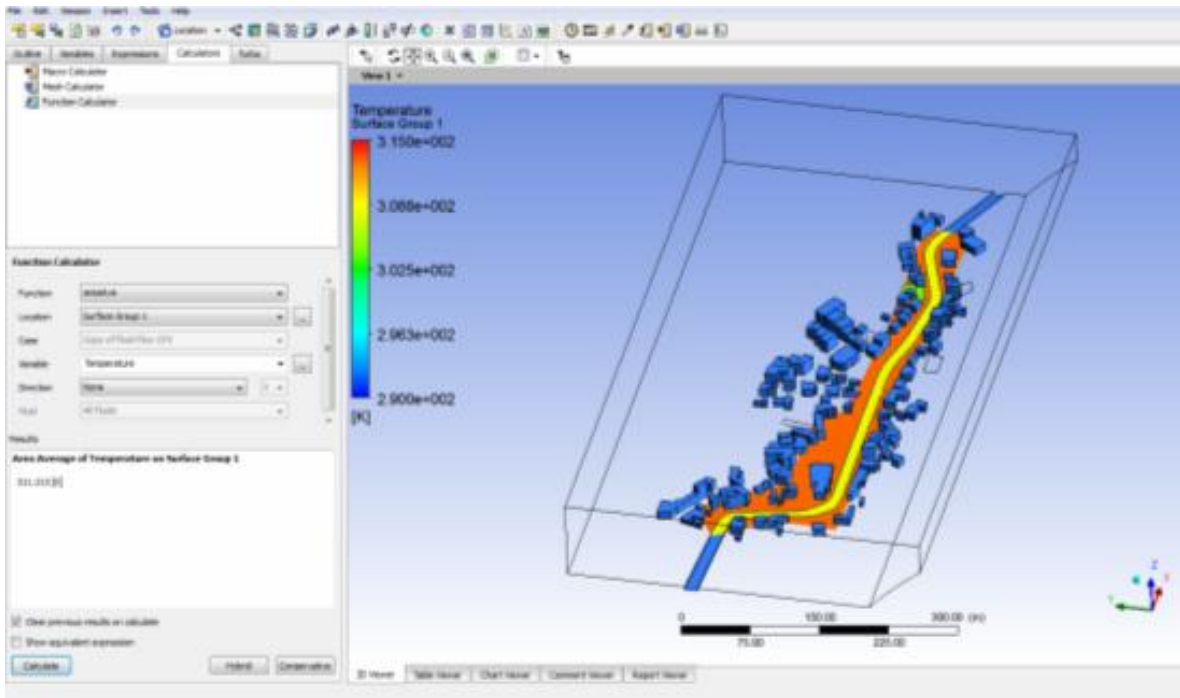


Figure 4: Mean surface temperatures of the existing condition

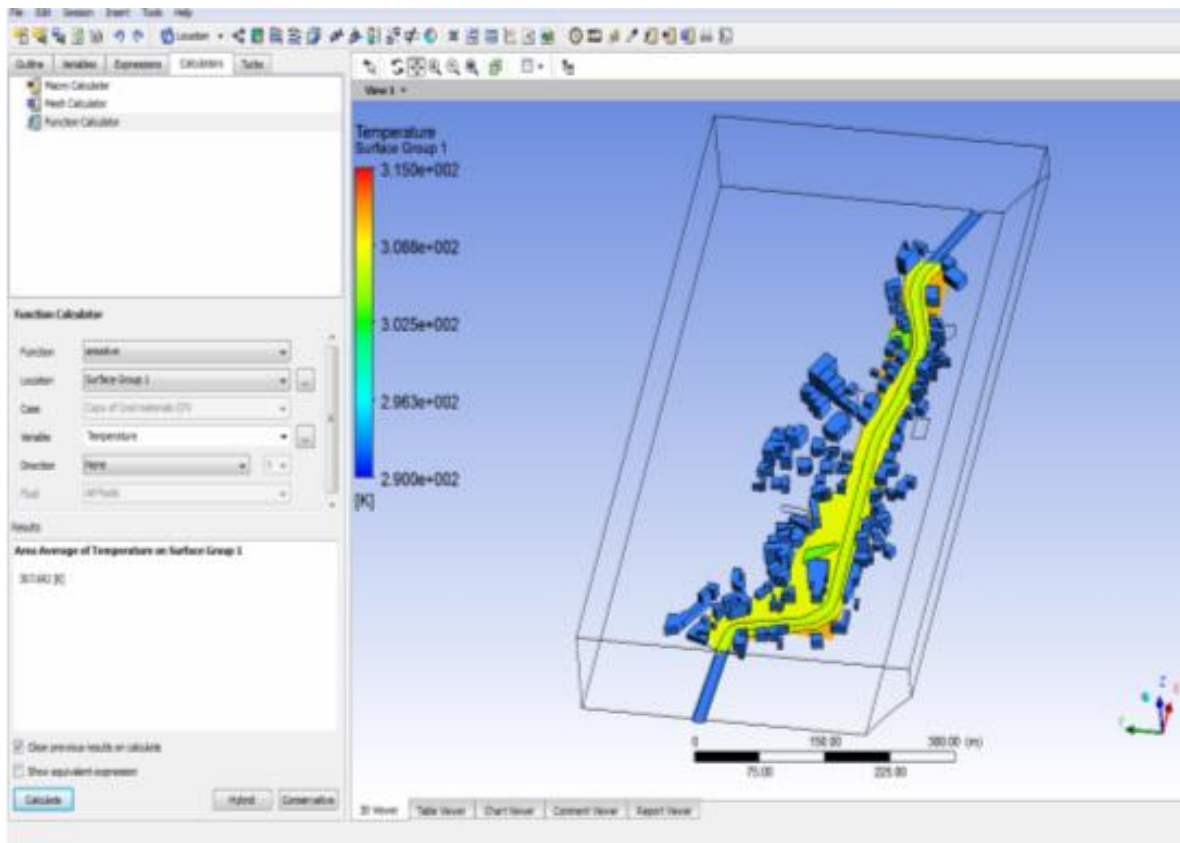


Figure 5: Mean surface temperatures of the predicted bioclimatic case

## 7. WIND FIELD DURING THE TYPICAL SUMMER DAY

Transient simulation of the wind field during the typical summer day with meteorological input of the area has been carried out. The typical wind field between 10:00 - 18:00 hours has been simulated in the area under consideration. From Figures 6 and 7 it was concluded that at 1.80 m height the wind velocity and turbulence would not change significantly due to the proposed bioclimatic interventions. Velocity vectors in the streets and in the open square place do not differ significantly at two cases with velocities below 1.0 m/s at all spaces (mean wind velocity before 0,578 ms<sup>-1</sup>, mean wind velocity after 0.574 ms<sup>-1</sup>). Generally, human comfort would not be affected at all open locations in relation to wind flow changes due to insignificant differences in velocities before and after rehabilitation.

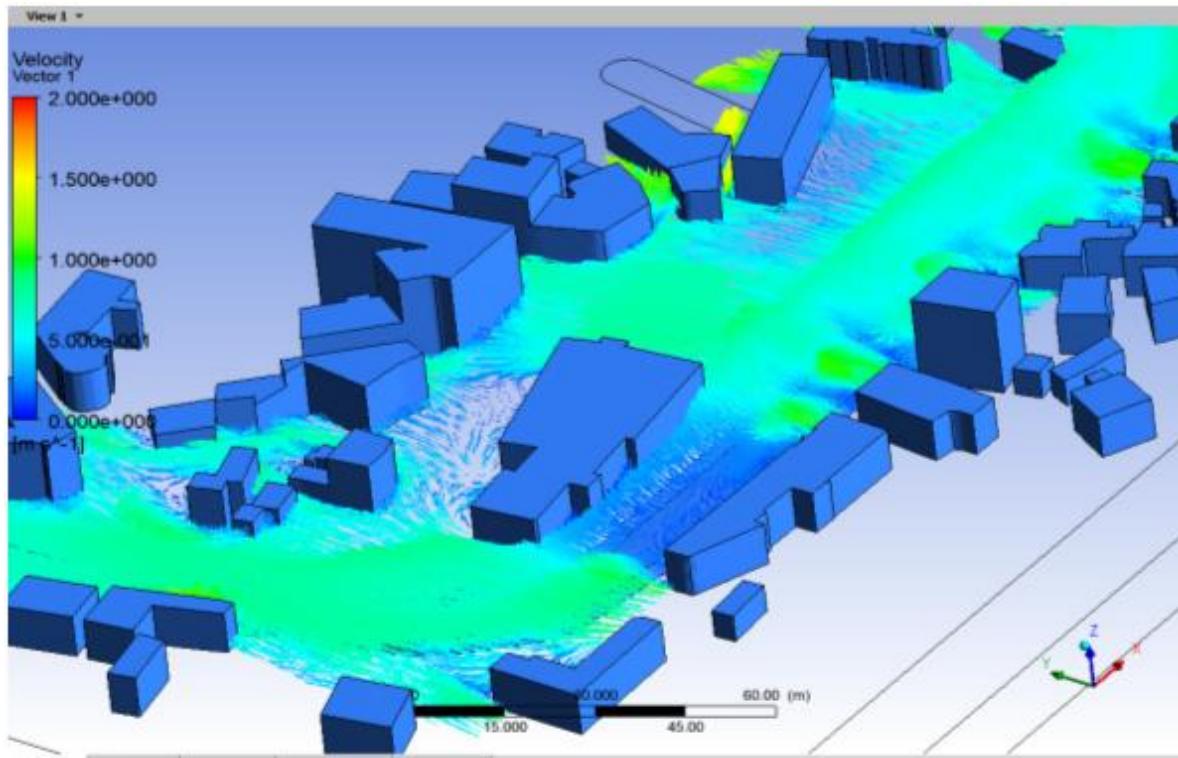


Figure 6: Mean wind field velocity in the urban complex before bioclimatic rehabilitation



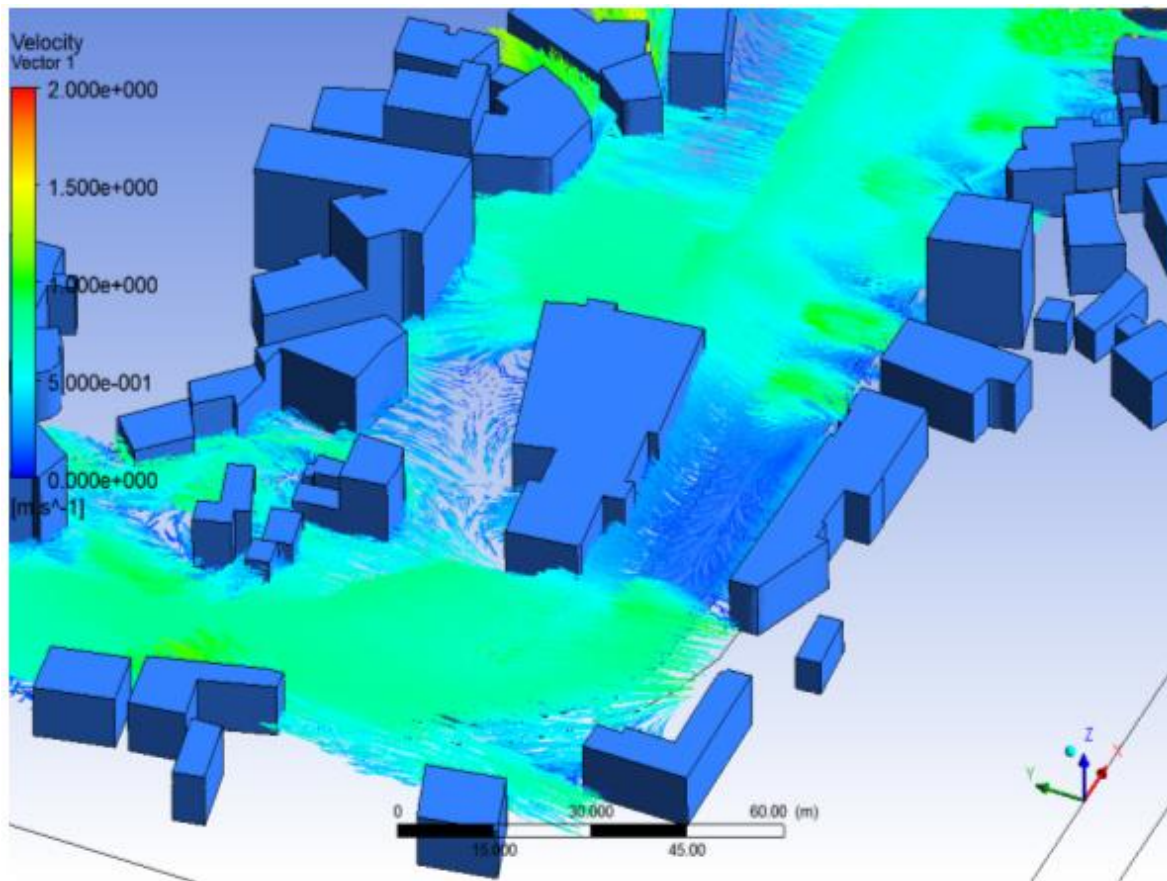


Figure 7: Mean wind field velocity in the urban complex after bioclimatic rehabilitation

## 8. CONCLUSIONS

Computational fluid dynamics simulation predicted the thermal conditions at the present case and the bioclimatically reformatted one. Each targeted parameter would improve if the proposed rehabilitation would take place in future. Relatively low air temperature improvement may lead to significant thermal comfort improvement. This is because thermal comfort is rather independent from air temperature but mostly correlated to radiant temperature. Note that, the wind field of velocities was approximately the same for the case before and after rehabilitation and therefore, it would not influence significantly the human thermal comfort conditions.

Reflection coefficients of cooled materials were higher than the conventional materials but emission coefficients were approximately the same. Therefore, it is rather obvious the significance of roofs, green areas and trees within the open urban complex in relation to the improvement of air temperature. Relatively high thermal comfort improvement is “easier” to be succeeded if surface thermal exchange is manipulated by any of the abovementioned ways. The exact influence of a bioclimatic intervention to microclimatic parameters must be studied in relation to urban complexity and climatic zone characteristics.

## 9. REFERENCES

ANSYS-CFD-SOFTWARE

<http://www.ansys.com/Products/Simulation+Technology/Fluid+Dynamics>.

- Dimoudi, A., Kantzioura, A., Zoras, S., Pallas, C., Kosmopoulos, P. (2013). Investigation of urban microclimate parameters in an urban centre, *Energy and Buildings*, 64, 1-9.
- Fintikakis, N., Gaitani, N., Santamouris, M. , Assimakopoulos, M. , Assimakopoulos, D.N., Fintikaki, M. , Albanis, G., Papadimitriou, K., Chryssochoides, E., Katopodi, K., Doulas, P. (2011). Bioclimatic design of open public spaces in the historic centre of Tirana, Albania. *Sustainable Cities and Society*, 1, 54-62.
- Gartland, L. (2008). *Heat islands: Understanding and mitigating heat in urban areas*. Sterling, Virginia: Earthscan.
- Gilbert, O.L. (1991). *The Ecology of Urban Habitats*. London: Chapman & Hall.
- Livada, I., Santamouris, M., Niachou, K., Papanikolaou, N., & Mihalakakou, G. (2002). Determination of Places in the great Athens area where the heat island effect is observed. *Theoretical & Applied Climatology*, 71, 219–230.
- Matzarakis, A., Rutz, F., and Mayer, H. (2006). Modelling the thermal bioclimate in urban areas with the RayMan model. *Proc of the PLEA 2006 Conf*, Vol. II, 449-453.
- Oke, T.P. (1973). *City size and the urban heat island*. *Atmospheric Environment*, 14, 769-779.
- PHOENICS software tool: <http://www.cham.co.uk/>.
- Stavarakakis, G.M., Tzanaki, E., Genetzaki, V.I., Anagnostakis, G., Galetakis, G., Grigorakis, E. (2011). A computational methodology for effective bioclimatic-design applications in the urban environment. *Sustainable Cities and Society*, 1, 54-62.
- [www.cres.gr/kape/Scientific\\_Guide\\_19\\_7.pdf](http://www.cres.gr/kape/Scientific_Guide_19_7.pdf) (Accessed 9th September 2013)