



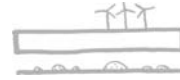
Securing the quality of ventilation systems in residential buildings

A manufacturers' point of view



Problems in the field



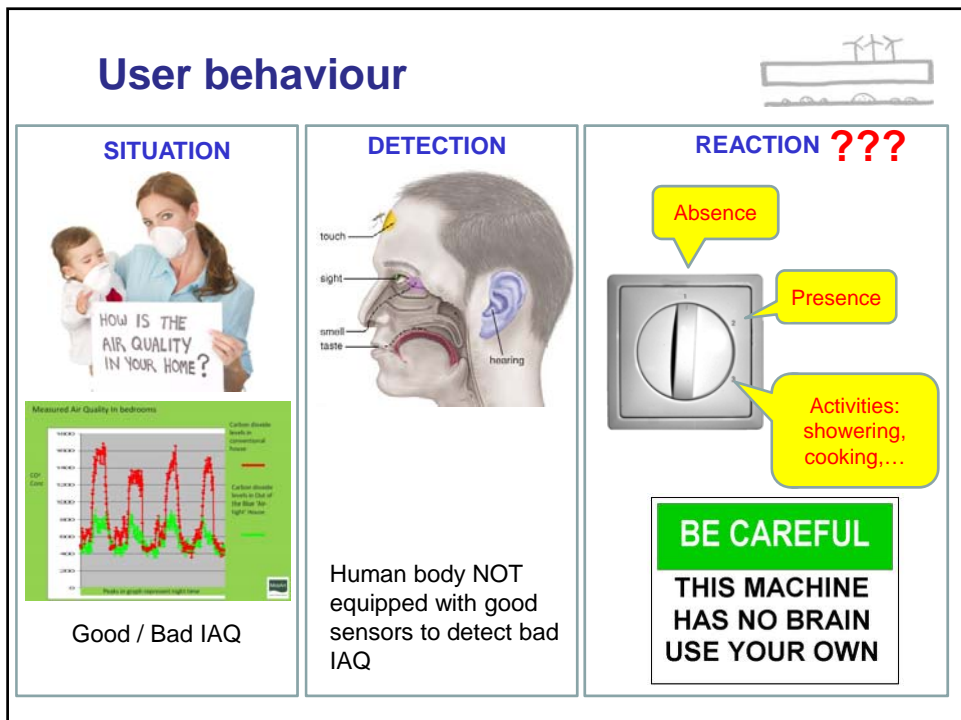


How innovative is the ventilation-industry ?



Evolution in building technology + lifestyle







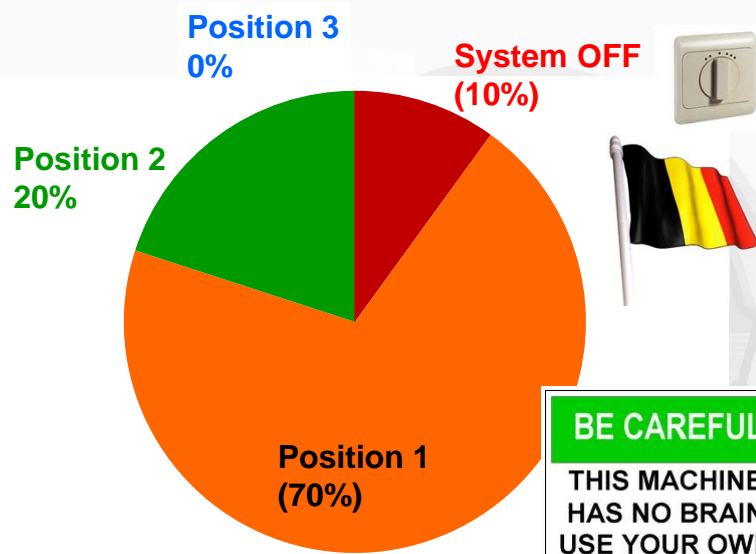
Results use of ventilation system

ventilation unit off	13%
Always position 1	27%
Position 1, shortly 2	20%
Position 1, shortly 3	30%
If present position 2	10%
If present position 3	0%

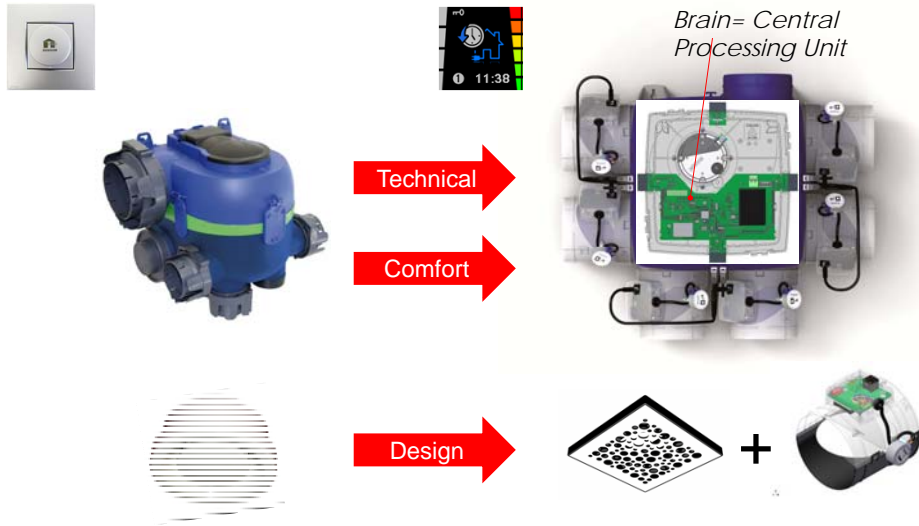


90% position 1 or out

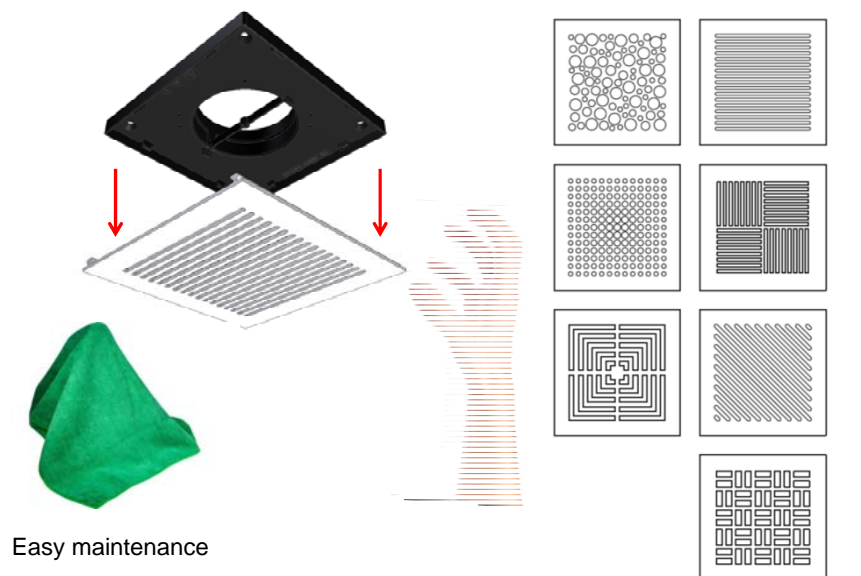
BE CAREFUL
THIS MACHINE
HAS NO BRAIN
USE YOUR OWN



Securing quality = Innovation !

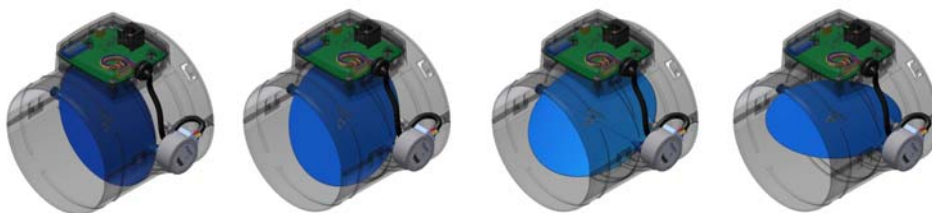


Securing quality: user

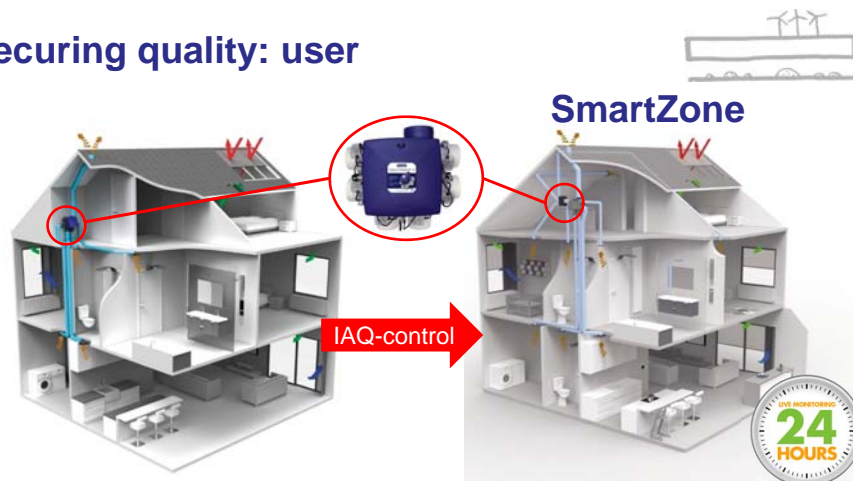


Securing quality: user

- Automatic operation: extraction rate adapted according to measured values and algorithm
- Control valve with integrated sensors (RH, VOC, CO₂)
Sensor type selected for most important pollutant in room



Securing quality: user

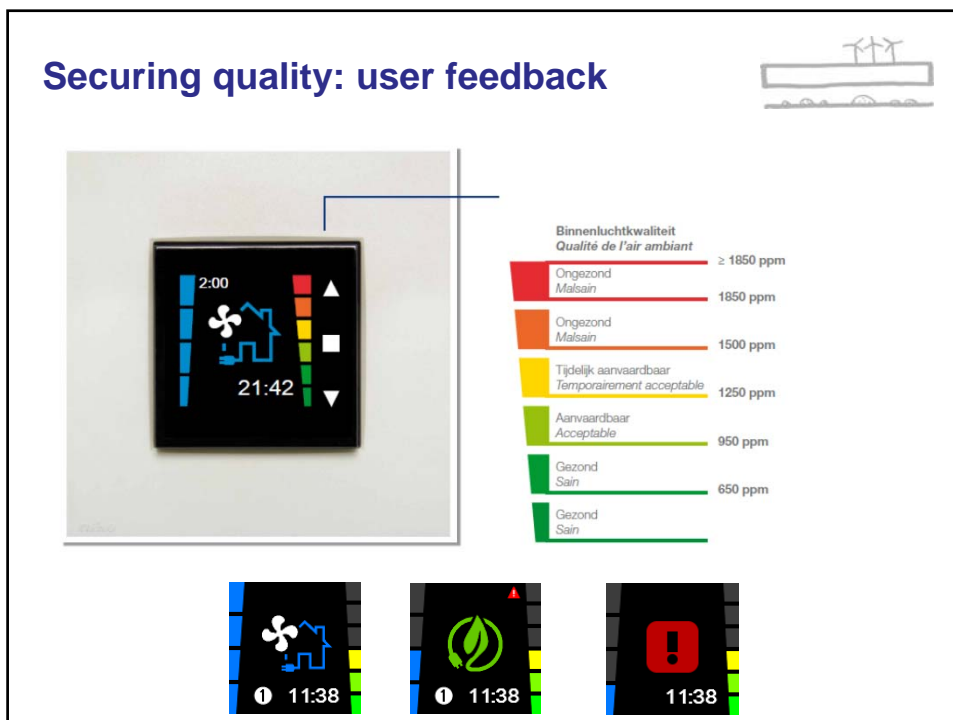
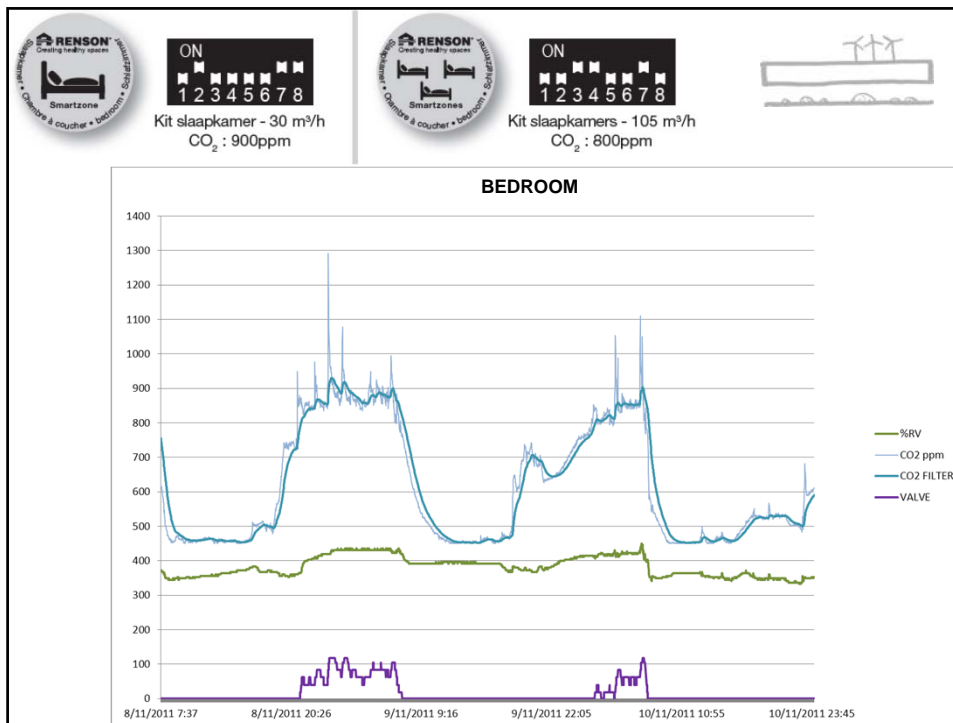


Mechanical extract ventilation (MEV)

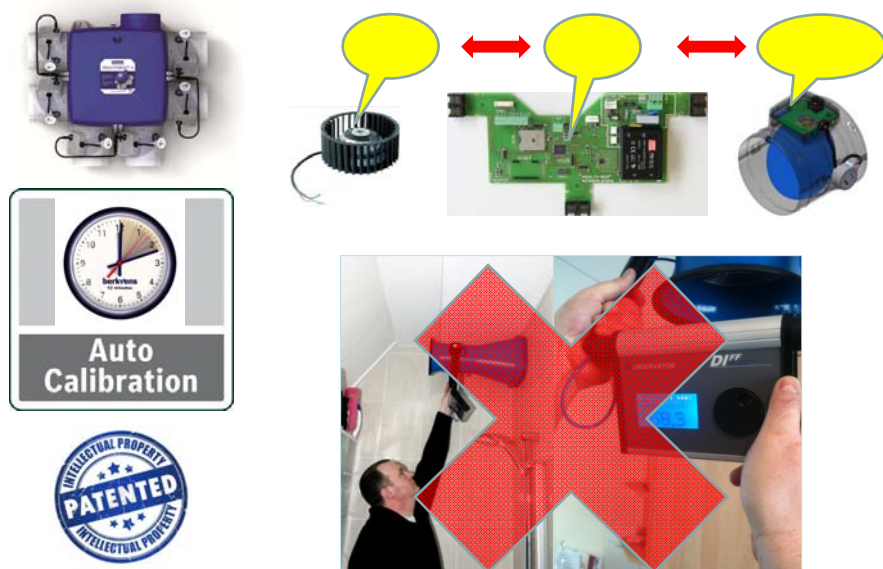
- Natural supply (window vent) habitable rooms
- Central mechanical extract (fan) wet rooms

Mechanical extract ventilation (MEV)

- Natural supply (window vent) habitable rooms
- Central mechanical extract (fan) wet rooms **and bedrooms**



Securing quality: Installer



Securing quality: Installer

